



# Important Information

**Welcome to Lakeview Lodge!**

**176 Lakeview Blvd Unit 2, Mammoth Lakes, CA 93546**

**Total number of allowed overnight guests : 6**

**Total number of allowed vehicles : 2**

**Two parking spaces are available per unit. See the following page for a map of where to park.**

**Failure to conform to the parking and occupancy requirements is a violation of the Municipal Code.**

**Noise complaints: As a guest we ask that you be mindful of our neighbors and adhere to quiet hours from 10pm to 7am. Guests may be cited for creating a disturbance or violating the Quality of Life Ordinance.**

**Trash : Please put all trash in the provided bear proof trash can at the front of the property. Management will remove the trash after your departure.**

**24 Hour Property Manager: Mammoth Prestige Property Services  
(760) 934-6584**

**Emergency Services Information:**

**Mammoth Lakes PD - (760) 965-3700**

**Mammoth Hospital - 85 Sierra Park Rd, Mammoth Lakes, CA  
94536 (760)934-3311**

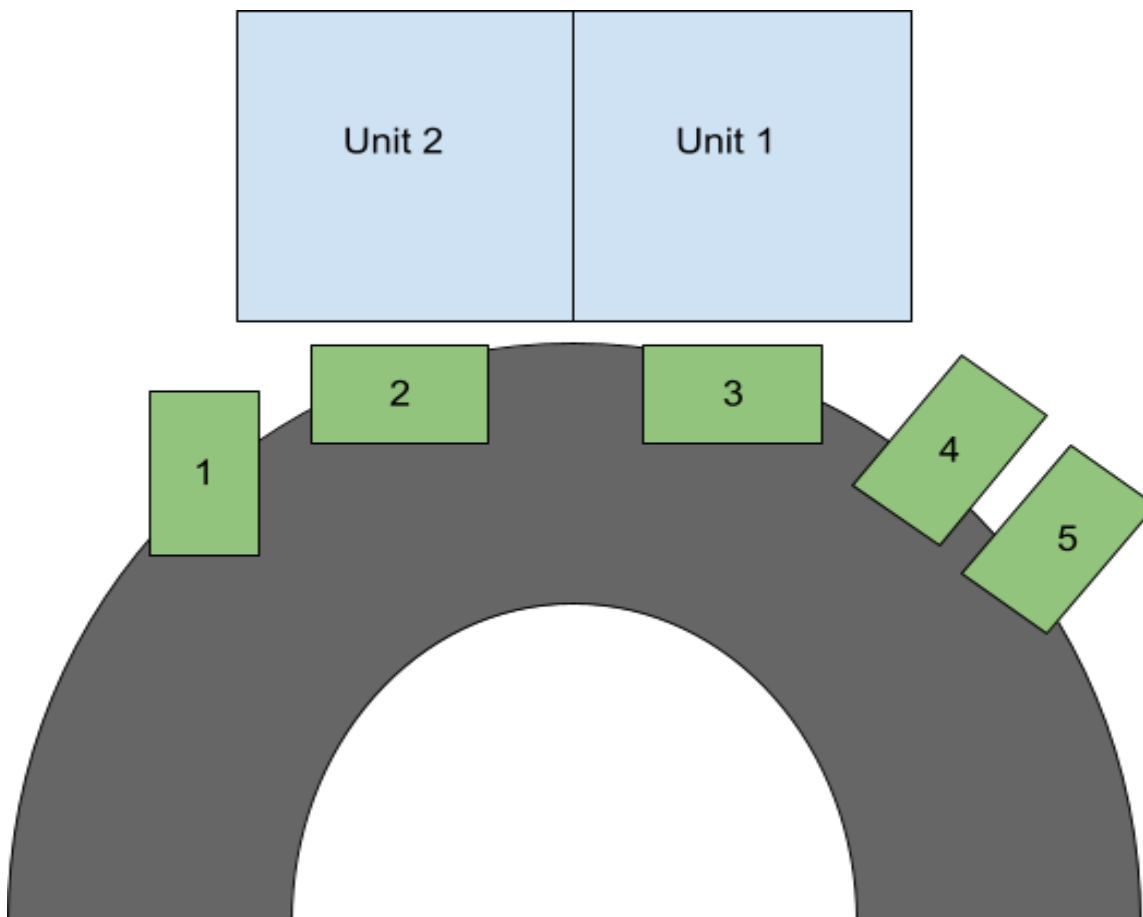
**Mammoth Lakes Fire - 3150 Main St., Mammoth Lakes, CA 93546  
(760) 934-2300**



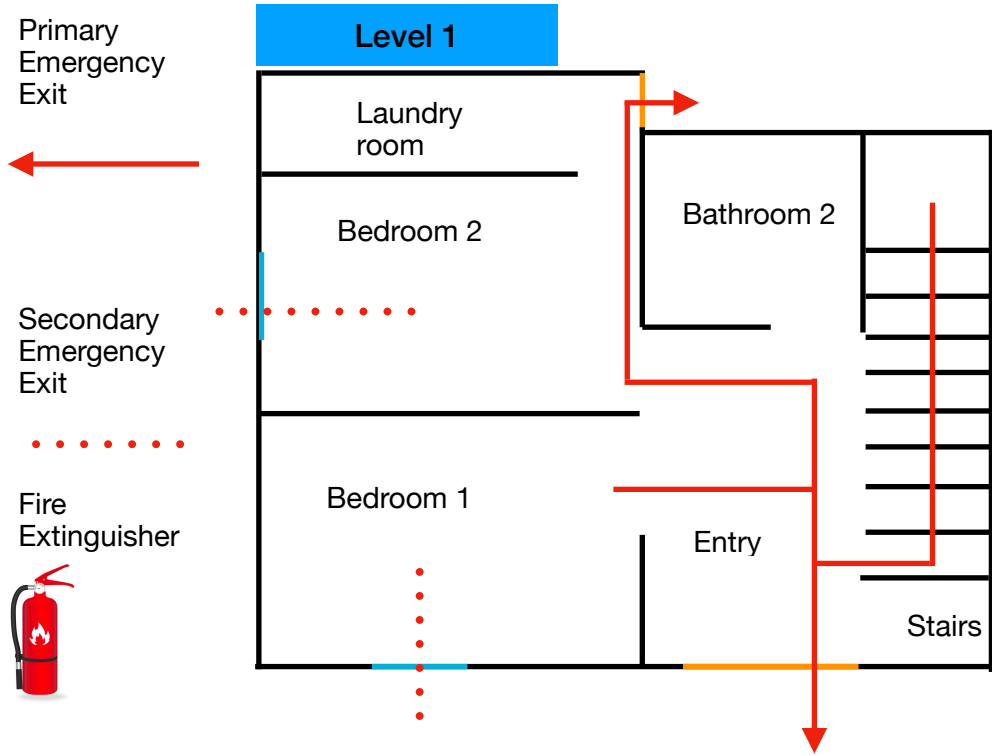
# Parking

There are 2 parking spaces available per unit. When snow removal equipment arrives, please move your car(s) temporarily so that the equipment can clear your parking spaces.

See map below for marked spaces.



# Emergency Escape Routes Unit #2



Window



Door

